

# “Hearing aids in the noisy world: benefits and challenges”

Maja Serman: audiologist

Sebastian Pape: sound engineer

Marc Aubreville: signal processing engineer

**Siemens Audiologische Technik**



# Motivation

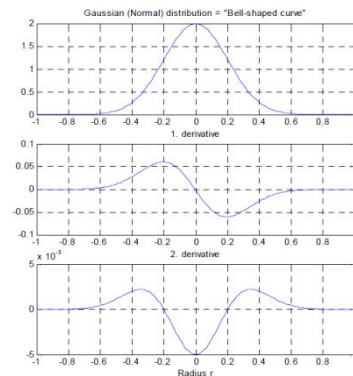


We may not need to understand how the auditory system works so as to make an artificial replica of it.

But we do need to understand how the auditory system works so as to better understand the problem that needs to be solved & borrow from nature



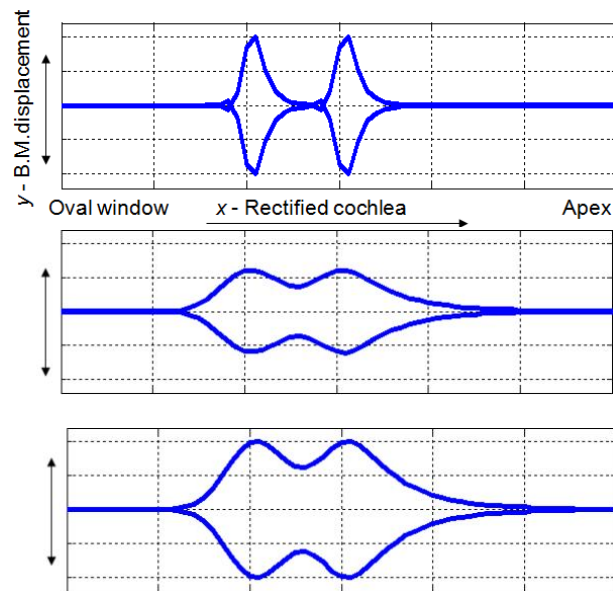
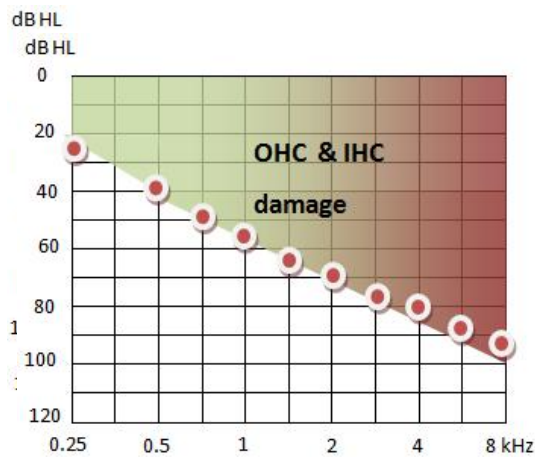
developer's perspective: solving the problems given the characteristics and constraints of the HA – specific implementation and functioning.



# Content

- Some basic facts as to the problem of speech in noise (SiN) for hearing impaired (HI)
- The main hearing aid (HA) features influencing and influenced by noise
  - Directional microphone
  - Noise reduction
  - Compression
  - Classifier
- Developer's questions
- Conclusion

# Hypotheses about cochlear functions

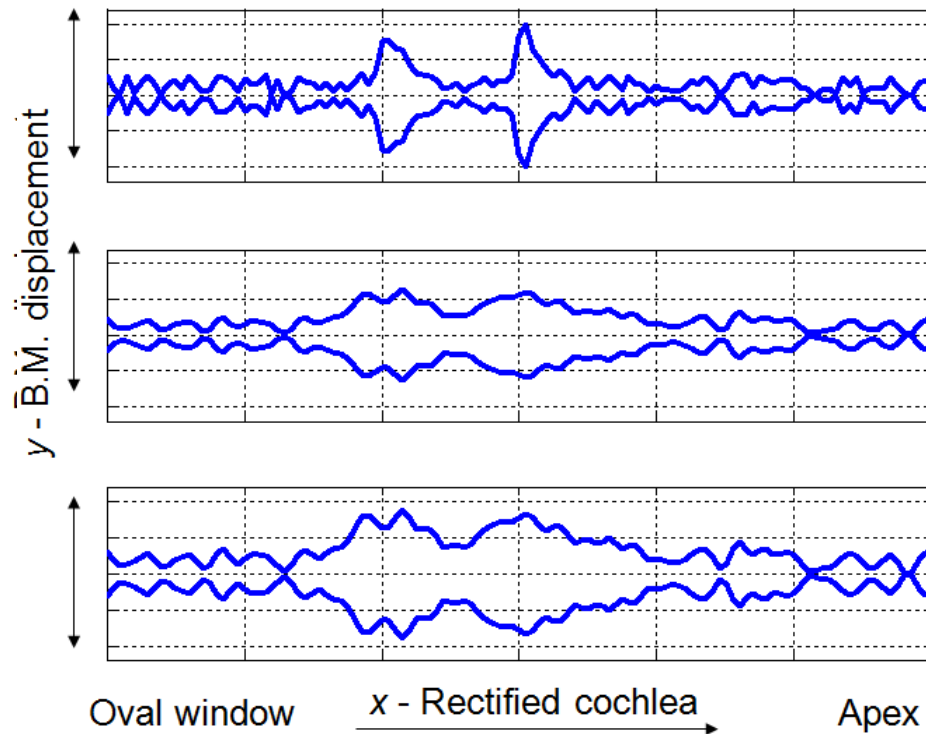


- The severity of the hair cell loss varies with frequency, the basal end of the cochlea being more prone to it.
- When HL exceeds 60 dB, at least some IHC loss can be assumed. Not even amplification can help here.

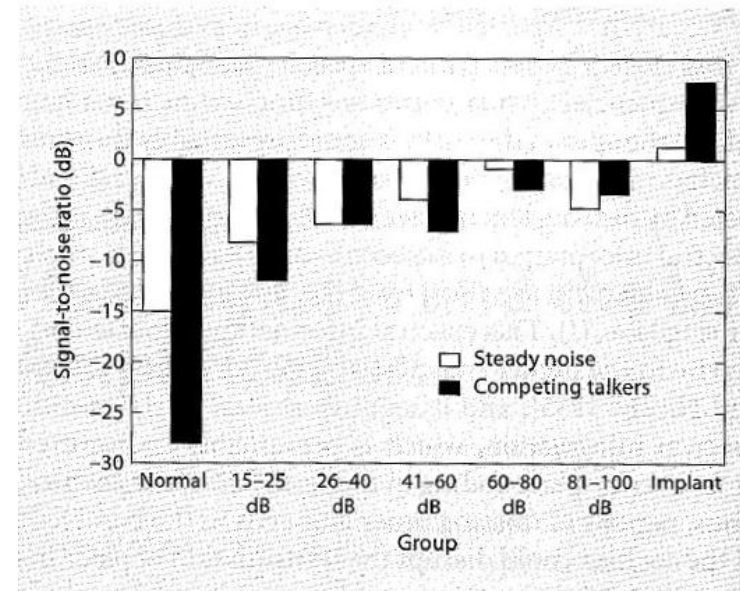
- displacement from 2 tones close in frequency.
- OHC damage only: smaller, rounder peaks from 2 tones close in frequency.
- HA: enlarges peaks but cannot sharpen (after Venema, 2008).

# SiN: challenges for the hearing impaired

Simple amplification with HA does not work for all speech sounds & listening situations.



...and the problem is hearing loss dependent



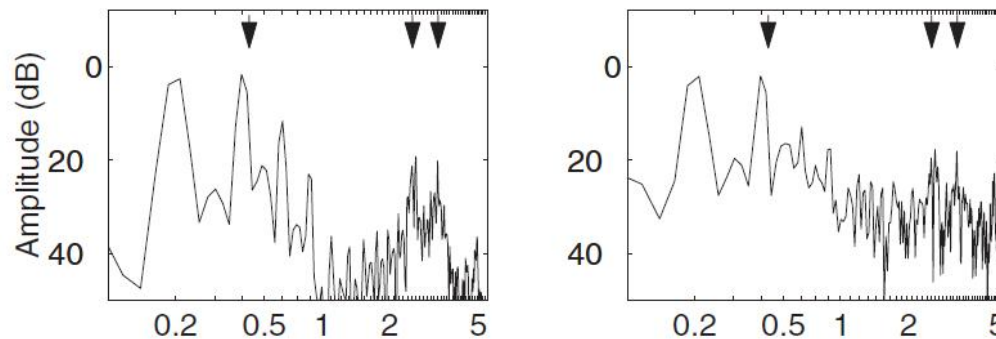
From Turner, 2006: SNR required for 50% correct understanding of spondee words for various listener groups (av. Hearing levels at 0.5, 1 and 2 kHz). Speech was amplified to audible levels for all subjects.

## SiN: challenges for the HA

### From the signal point of view:

Dubbelboer & Houtgast, 2007: “In order to improve speech intelligibility in noise one should know:

- how speech is physically changed
- which of these changes are most detrimental, and
- how the most detrimental changes can be counteracted, without introducing new distortions. “

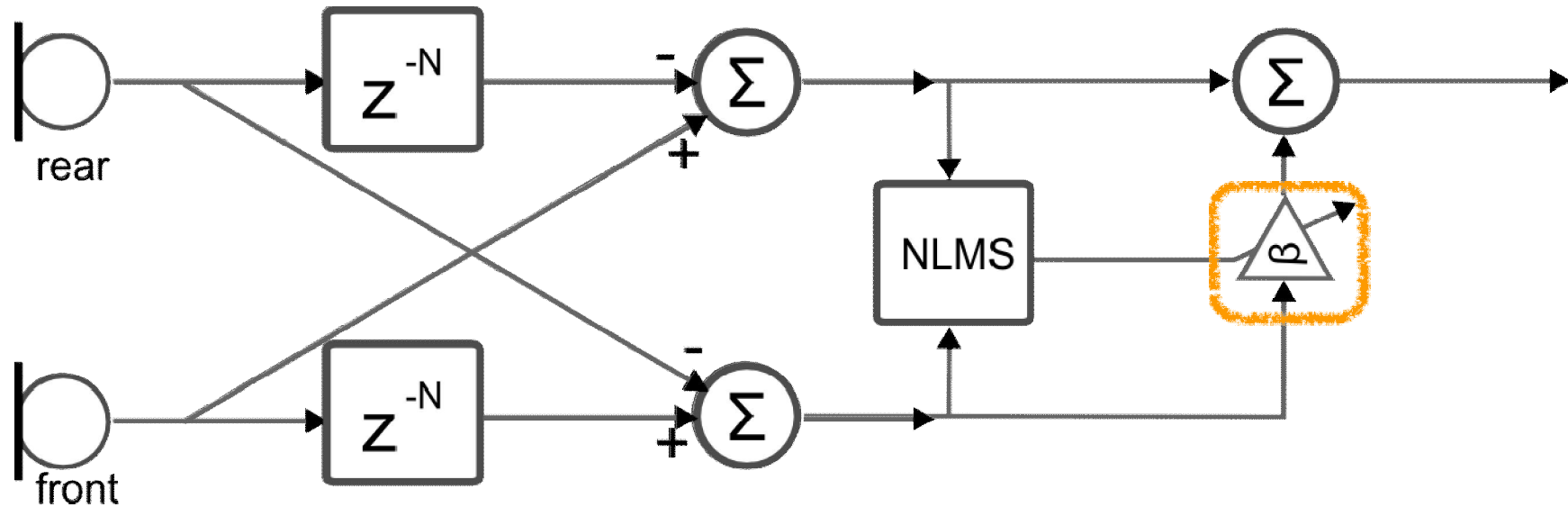


- Fourier transform of the vowel [i], first three formants are shown a) in quiet b) in pink noise at 6 dB SNR (from Assmann & Summerfield, 2003)

**The goal of HA functioning in noise: estimate the type and the amount of noise and separate it from the speech signal.**

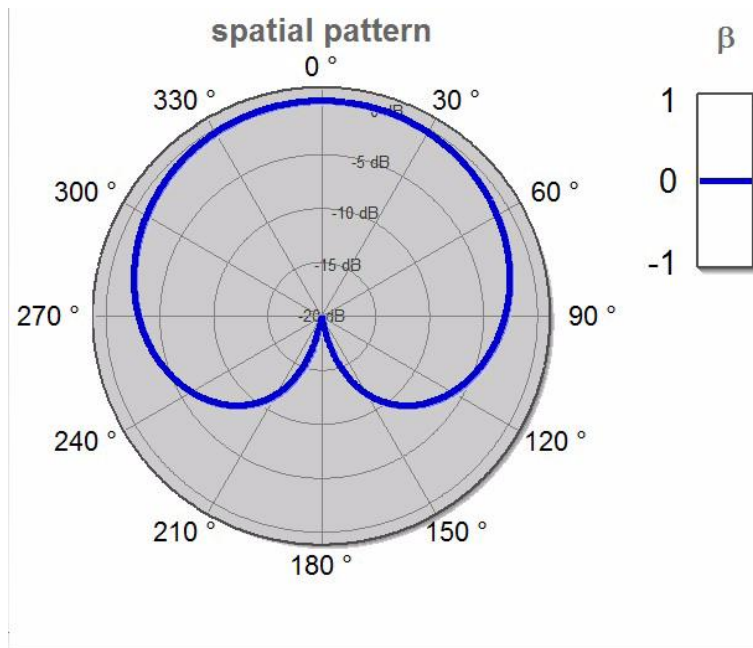
# SiN with HA: Adaptive differential beam forming

*Principle introduced by Elko and Pong (1995)*



*The adaptation parameter  $\beta$  is optimized to achieve a minimum output level of the beamformer.*

# SiN with HA: Adaptive differential beam forming



Free field, ideal directivity patterns.

The direction of the spatial notch is moving with the adaptation parameter  $\beta$ .

The adaptation takes place across a number of independent frequency channels  $\rightarrow$  precise frequency dependent head shadow effects compensation (Fischer et al., 2012)

By limiting  $\beta$ , one can control the directionality - an extension of Elko's principle enables steering to the rear\* with  $\beta$  (Aubreville, 2013).

Effect: Mapping the range of  $\beta$  from  $[-2;-1)$  to  $(-1;0]$  with flipping of beam pattern signals\*.

$\beta$	1	0	-1	-2
direction	front	front	omni	rear
notch	+/- 90°	180°	---	0°



## SiN with HA: Situation dependent activation of beam forming

Situation	Beamformer strength	Beam direction
Frontal speech in noise	+++	front
Speech in quiet	+	front
Speech from the side (e.g. car)	o	omni
Speech from the back (e.g. car)	++	back
Music	o	omni
Wind	o	omni (in low frequencies)

# SiN with HA: Noise reduction



*fan noise*  
*microphone noise*



*street noise*



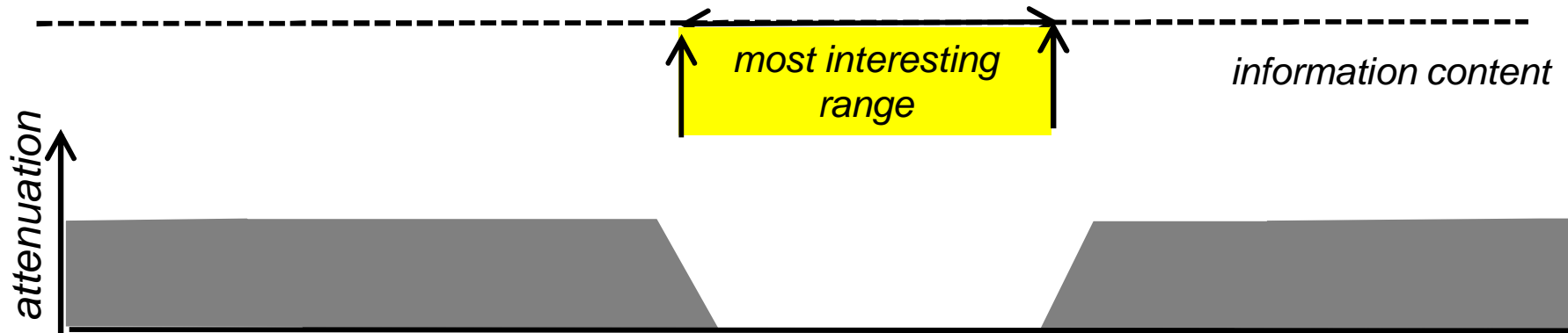
*speech and*  
*speech interferers*



*transient noises*  
*impulse like noises*  
*fast changes*

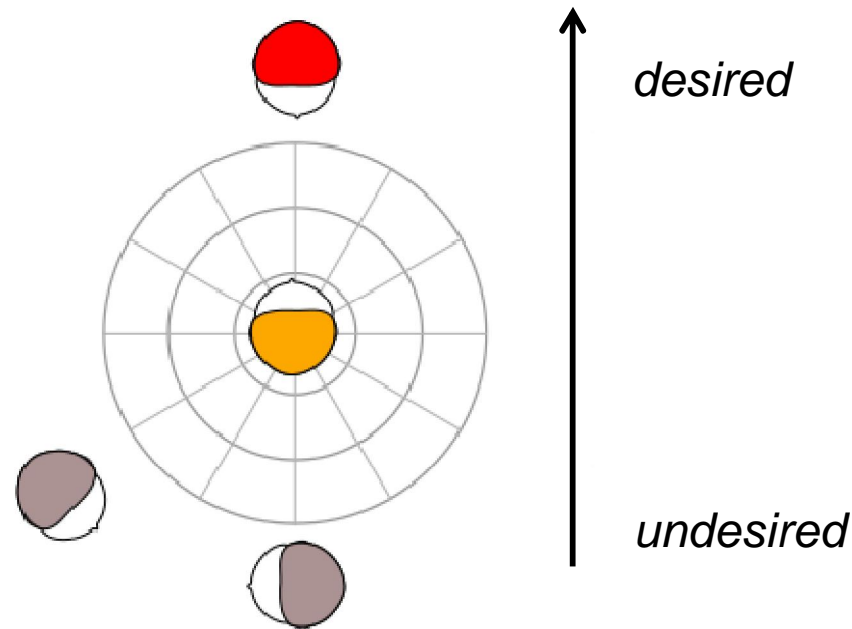
*noises with very slow modulation*

*modulation analysis*



## SiN with HA: Direction dependent noise reduction

*What happens when the interfering signals have speech-like modulation properties?  
We change the separation criterion to direction of arrival where signal coming from the front is regarded as a desired target signal and everything else is assumed to be ,noise‘.*

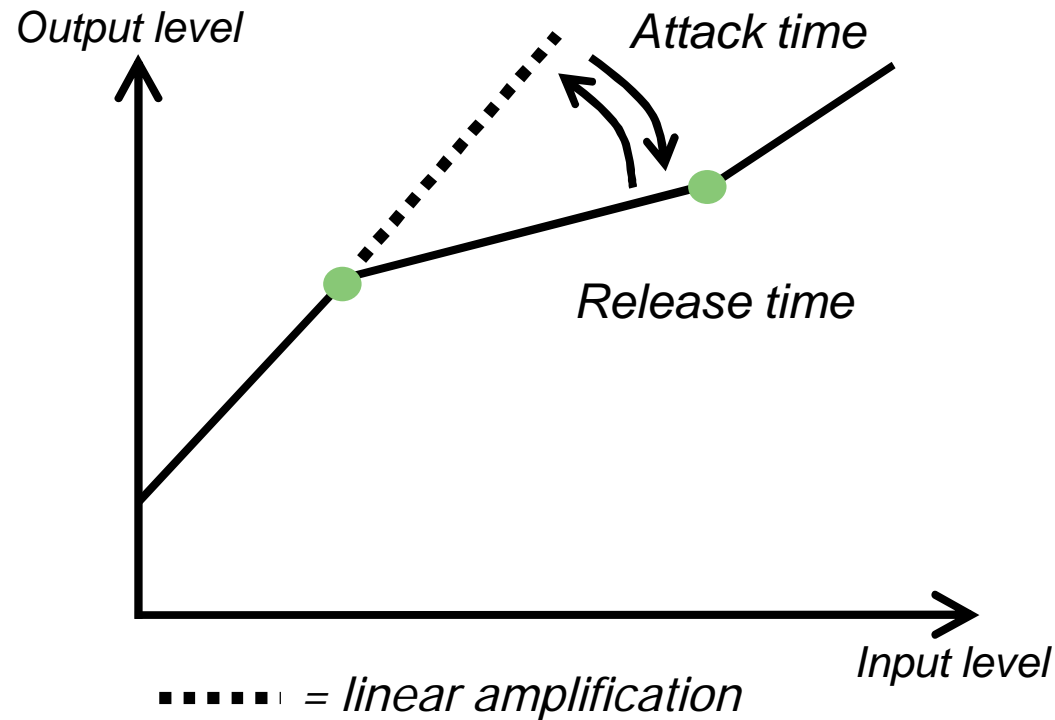


*For details see (Fischer et al.,2012)*

## SiN with HA: Integrated noise reduction

Situation	Attenuation
Speech in quiet	None (classifier decision)
Speech in steady noise	Attenuate with care (speech modulation, direction dependent noise reduction possible)
Speech in babble noise	Attenuate with care (speech modulation, direction dependent noise reduction possible )
Music	None (classifier decision)
Steady noise	Modulation based attenuation
Transient noise	Modulation based attenuation

## SiN with HA: Compression



*Characteristic gain curve:  
More gain for soft than for  
loud input levels.*

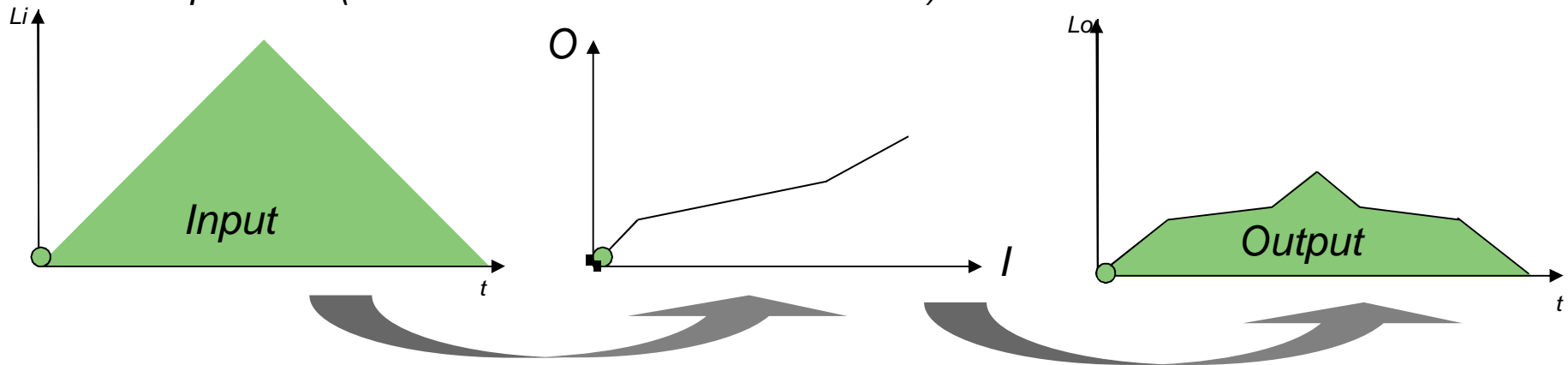
*Attack time:  
Time needed for the gain  
for the loud input signal to  
drop (to the wished for  
value).*

*Release time:  
Time needed for the gain for the  
soft input level to come back to its  
full value.*

*(From Pape, 2013)*

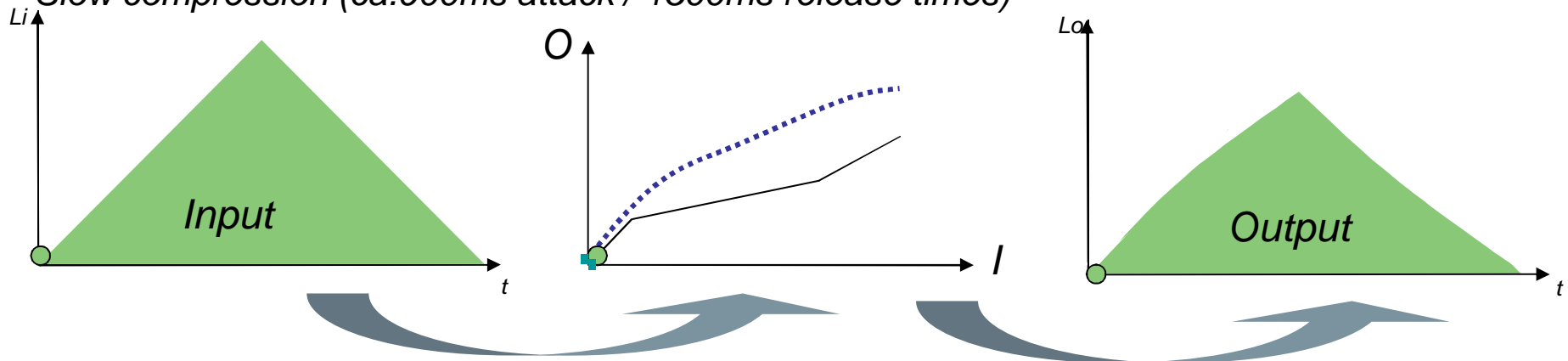
# SiN with HA: Compression

*Fast compression (10ms attack / 100ms release times)*



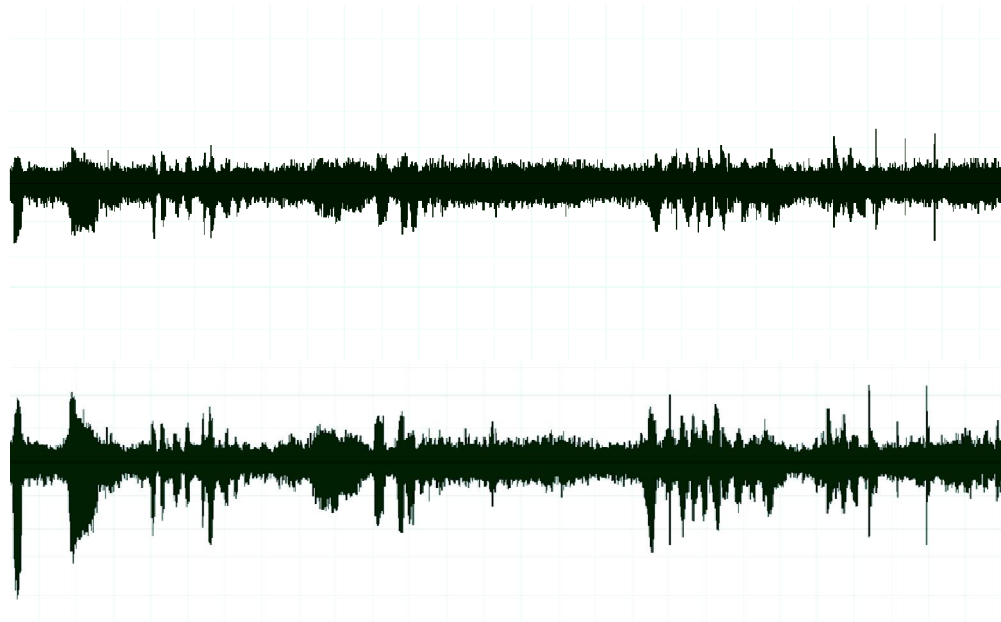
***Fast reaction to loud sounds, loss of sound quality.***

*Slow compression (ca.900ms attack / 1500ms release times)*



***High sound quality, but short, loud sounds will be overamplified.***

## SiN with HA: Compression



### **Fast compression**

*Speech envelope fuses with the noise and difficult to understand.*



### **Slow compression**

*Speech envelope remains raised from the noise and thus easier to understand.*

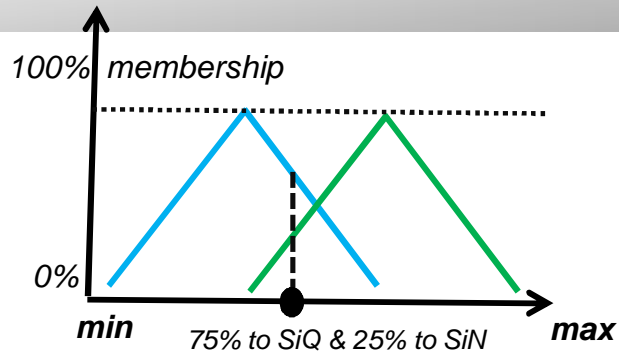
*Speech in canteen noise – better speech understanding with slow compression.  
This may change for a different type of noise!*

## SiN with HA: Compression

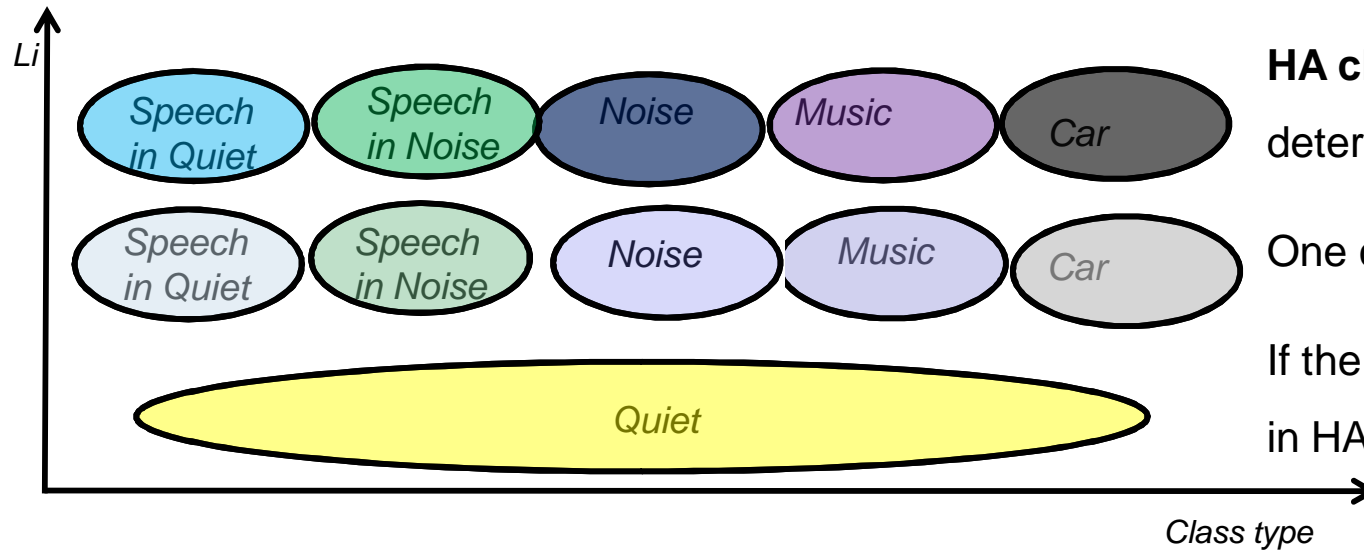
Situation	Dynamic range estimation of input signal	Compression speed
Speech in quiet	~30 dB	fast
Speech in stationary noise	~5 dB	slow
Speech in fluctuating noise	~5-15 dB	fast
Music (radio music)	~5 dB	slow
Noise	~5-30 dB	fast
.....		



# SiN with HA: The classifier



One possibility for classes' mix: fuzzy logic (triangular) membership functions.



HA classifier: A very clean & deterministic class distinction.

One class at the time.

If the class fails & the differences in HA settings are big – a problem.

'Human classifier': Transitions (happy being in between the classes) & on-line class-definition changes.

## SiN with HA: developer's questions for each feature:

*What benefit if it works?*

*This depends on for example...*

*How good are we at classifying each of these situations?*

*How quickly does the situation change and do we follow?*

*What will happen in ambiguous situations?*

*What are the differences between settings in two classes and*

*how to change between them smoothly?*

*Who determines which situation is there: the HA or the patient?*

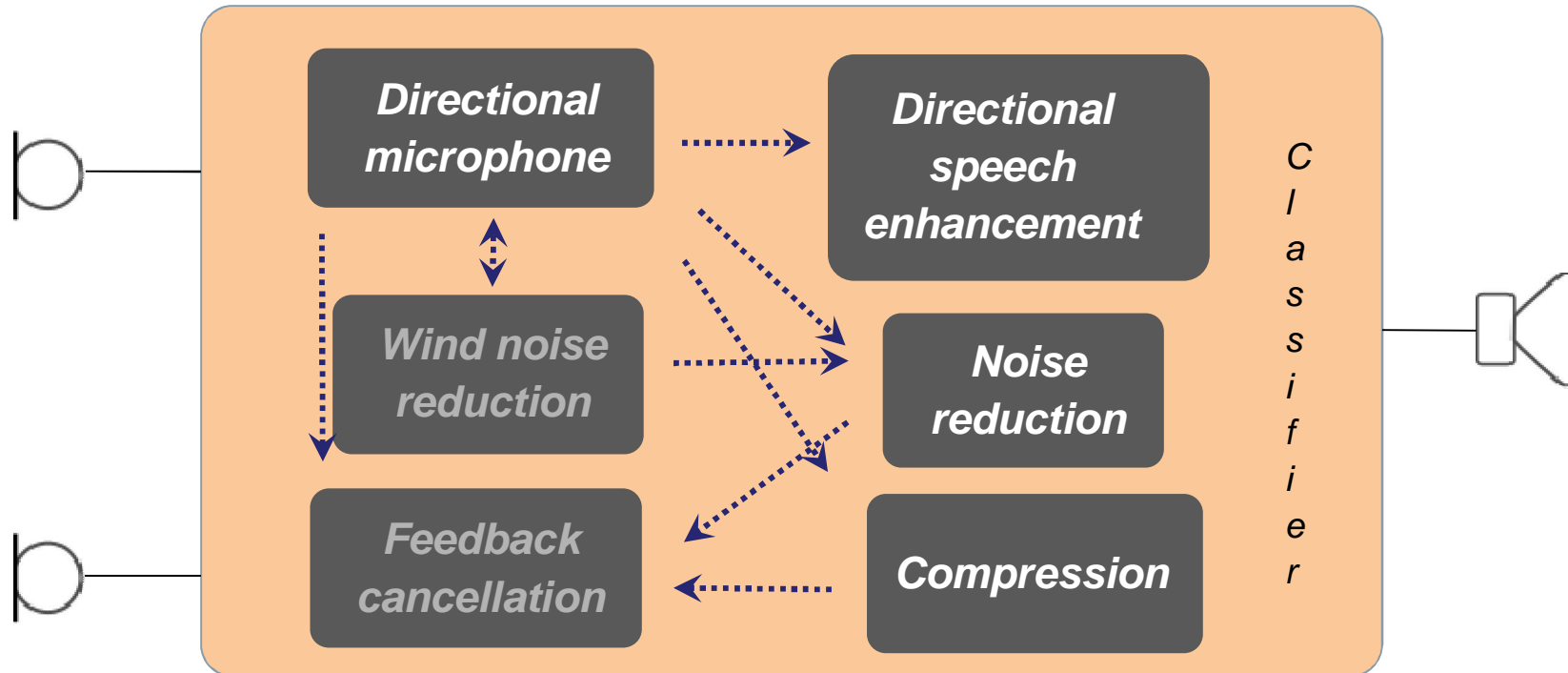
*How reliable are the real life /lab tests?*

## SiN with HA: developer's questions for each feature:

*What happens if a „faulty“ (direction, noise reduction, compression...) is imposed on a certain situation? For example....*

Directional microphone	Noise reduction	Compression
- no ability to listen to anything falling outside that direction	-musical noise artefacts	- artefacts
- loss of spatial cues from any other direction	- loss of localisation cues and spatial impression	-unnatural sound impression
-gain loss in low frequent channel or	-loss of natural sound impression (always includes noise, eg reverb - important for spatial impression)	- loss of protection for loud, short sounds
- microphone noise due to compensation for the gain loss	- loss of SI due to ---what exactly? Still unclear why no SI benefit!	- it cannot restore selectivity in noise (not an expansion)
- Some subjects may do worse than others	-Some subjects may do worse than others	-some subjects may do worse than others

## SiN with HA: altogether!



- Not only that one algorithm (feature) has to be correctly parametrised for each situation, they all have to work in synchrony.

## SiN: influential factors

Up till now, we described influential factors from the signal point of view.

### Factors from the point of view of the listener in a noisy situation:

- Individual limits of e.g. hearing thresholds, spectral and temporal selectivity, informational masking and working memory capacity as well as learned strategies and templates i.e. prior knowledge and expectations.
- The wish



## SiN in HA: Conclusion

Each HA feature estimates a specific situation on the basis of estimation of some signal characteristics. Ideally, feature benefit depends on how successful the estimation is.

However → *This may work in ideal, specific situations, but in a HA each solution has to work in any situation (i.e. if nothing else - degrade gracefully)!*

*Additionally,*

1) *In view of individual's abilities:*

*Every person has learned templates and strategies how to cope in noisy situations (ITDs, ILDs, loudness perception, timbre, lip reading, visual imagining, position of the head but also auditory scene analysis and/or purely cognitive associations) and the HA should profit from these and not destroy them.*

2) *In view of that individual heart's desires:*

*More often than not, we analyse and experience the **same** situation differently, just by wishing it. The HA should allow for this!*

## SiN in HA: the future

Individualisation on all fronts:

- HA learning: the HA should have the ability to learn and change its behaviour, helped by any other relevant information (GPS, body movement, classification, eyes...)
- Patient learning: training programs and education about the need for acclimatisation and re-learning. Must be fun & free or it will not work.
- Interaction between the HA and the patient: tools to override the decisions of the HA...
- Towards individual's limits and capacities influencing the parametrisation of the HA...



A world of difference...





The END



# References

1. Assmann P, Summerfield Q. 2004 The perception of speech under adverse conditions. New York: Springer
2. Allegro S, Büchler M and Launer S. 2001 Automatic sound classification inspired by auditory scene analysis. In Consistent and Reliable Acoustic Cues for Sound Analysis (CRAC), Aalborg, Denmark
3. Aubreville, M . 2013 Intelligent Activation and Automatic Control of hearing aid algorithms, EUHA conference, Nürnberg
4. Dubbelboer F, and Houtgast T. 2007 A detailed study on the effects of noise on speech intelligibility,” J. Acoust. Soc. Am.122, 2865–2871.
5. Elko GW, and Pong ATN. 1995 ‘A simple adaptive first-order differential microphone’, ASSP Workshop, Vol. 15, pp. 169–172.
6. Fischer E, Puder H , Hain J. 2012 Optimized Directional Processing in Hearing Aids with Integrated Spatial Noise Reduction Workshop on Acoustic Signal Enhancement, Proceedings, RWTH Aachen University, Germany.
7. Fischer E, Puder H, Hain J and Weber J. 2013 micon Directivity and Directional Speech Enhancement, white paper retrieved from [http://hearing.siemens.com/Resources/Literature/\\_Global/publications/2012%20-%20%20white-paper%20-%20micon%20enhanced%20directivity.pdf?\\_\\_blob=publicationFile](http://hearing.siemens.com/Resources/Literature/_Global/publications/2012%20-%20%20white-paper%20-%20micon%20enhanced%20directivity.pdf?__blob=publicationFile)
8. Gnewikow D, Ricketts T, Bratt GW and Mutchler LC. 2009 Real-world benefit from directional microphone hearing aids . J Rehab Res Dev , 46,603 – 618.
9. Hofman PM, Van Riswick JG, Van Opstal AJ. 1998 Relearning sound localization with new ears. Nat Neurosci 1:417– 421.

## References

10. Keidser G, O'Brien A, Carter L, McLelland M and Yeend I. 2008 Variation in preferred gain with experience for hearing aid users. *Int J Audiol* 47(10), 621-635.
11. Lunner T. & Sundewall-Thorén E. 2007 Interactions between cognition, compression, and listening conditions: effects on speech-in-noise performance in a two-channel hearing aid. *Journal of the American Academy of Audiology*, 18, 539-552.
12. Ng E H N, Rudner M, Lunner T, Pedersen M S and Rönnerberg J 2013 Effects of noise and working memory capacity on memory processing of speech for hearing –aid users. *International Journal of Audiology* 52: 433-441.
13. Pape, S. 2013 , Dynamikkompression in modernen Hörsystemen. EUHA conference, Nürnberg
14. Patterson RD and Moore BCJ. 1986 Auditory filters and excitation patterns as representations of frequency resolution, in B.C.J. Moore (ed), *Frequency Selectivity in Hearing*, pp.123-177. London: Academic Press Ltd.
15. Peters R, Moore B, and Baer T. 1998 Speech reception thresholds in noise with and without spectral and temporal dips for hearing-impaired and normally hearing people, *J. Acoust. Soc. Am.* 103, 577–587.
16. Souza P, Wright R and Bor S. 2012 Consequences of broad auditory filters for identification of multichannel-compressed vowels *J Speech Lang Hear Res* 55(2): 474-486.
17. Shinn-Cunningham B. 2009 I want to party, but my hearing aids won't let me? *Hearing Journal* 62, 10-13.
18. Turner CW. 2006 Hearing Loss and the Limits of Amplification. *Audiology and Neurotology*, 2006;11 S:2–5.

## References

19. Venema, T. 2008 *Common Clinical Encounters: But Do We Really Know Them?* Paper retrieved from:  
[www.audiologyonline.com/articles/common-clinical-encounters-59-but-909](http://www.audiologyonline.com/articles/common-clinical-encounters-59-but-909)
20. Wong L L, Ng EHN and Soli SD. 2012 Characterization of speech understanding in various types of noise . J. Acoust. Soc. Am. 132, 2642–2651.
21. Wu Y, Stangl E and Bentler RA. 2013 Hearing-aid users ' voices: A factor that could affect directional benefit . Int J Aud 52: 789-794.